

## **Fast Cruise February 2018 – COURSES**

**NOTE Start 11.00 – 11.10; one race only but with two courses. Both courses start and finish in the same locations.**

**Boats with an LSC Club Handicap of 1.079 and lower shall sail the short course.**

**Boats with an LSC Club Handicap of 1.080 and above shall sail the long course**

The course is defined by the appx Lat/Long POSITION of each mark and as shown on the chartlet. Names of buoys are given for assistance only and should not be relied upon.

Control yacht is **Kioni**. Keep a listening watch on VHF Ch 77 from 09.30 until the end of the race or your earlier retirement for course amendments or course shortening instructions. Advise race control immediately by **VHF (not SMS)** if you retire at any point before finishing the course. Send your **start and finish times** by SMS to 07970 846 698 in the format <boat name, start hh.mm.ss, finish hh.mm.ss., boat in front, boat astern>, taking the times from your GPS. **Please do not send elapsed times, or use other formats.**

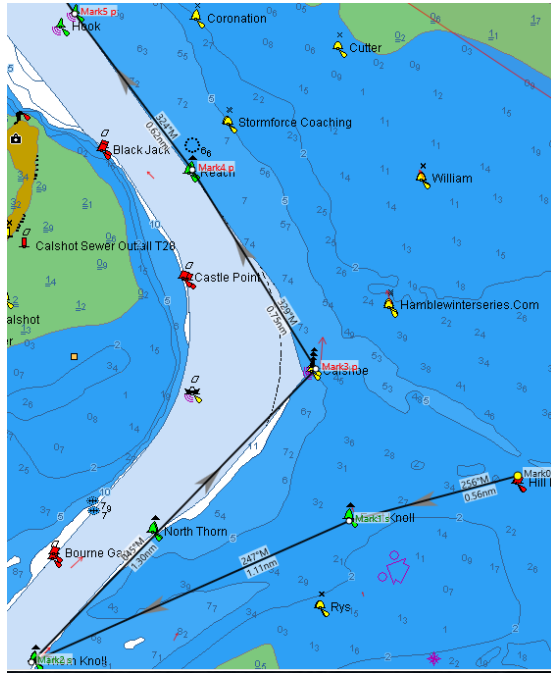
**NB. You must submit your start and finish times by 17.00 on Saturday or you will be scored DNF.**

Participants should ensure they are aware of the Southampton Port byelaws concerning the transit of ships through the central Solent precautionary area and the related "moving areas of concern".

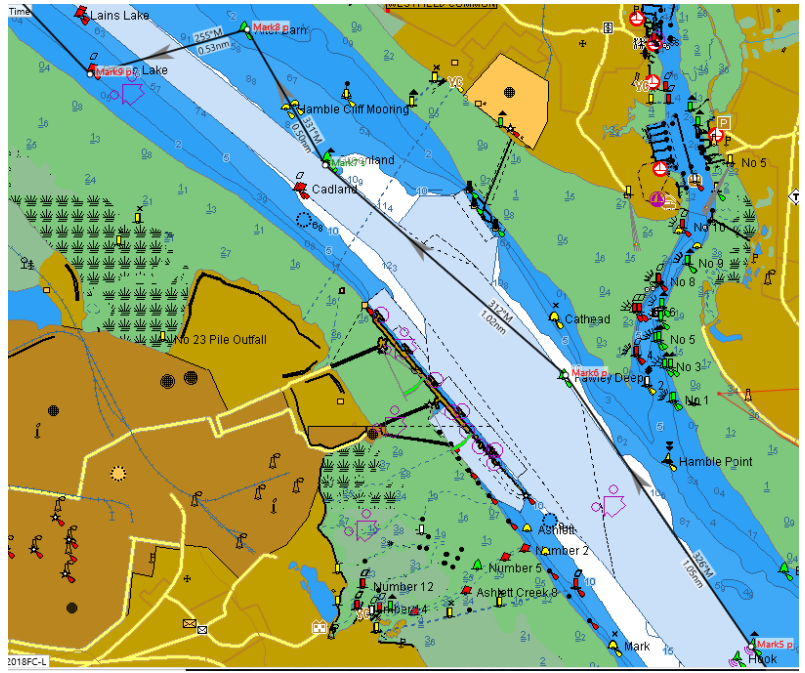
Berths for those who have booked them have been reserved at Southampton Town Quay marina. Participants should call them on VHF 80 (or 02380 234397) when approaching and let them know they are with the Little Ship Club rally. Skippers to settle their own berthing fees, but ask for the Club rally discount.

# LONG COURSE

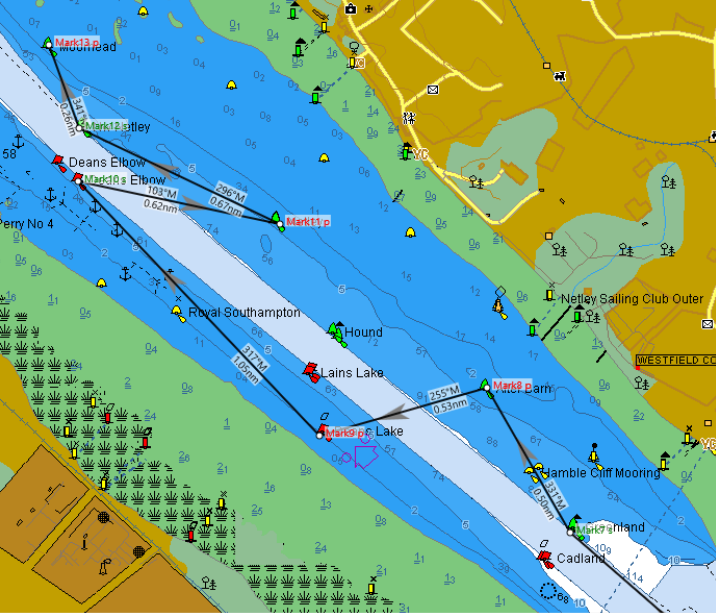
**A**



**B**



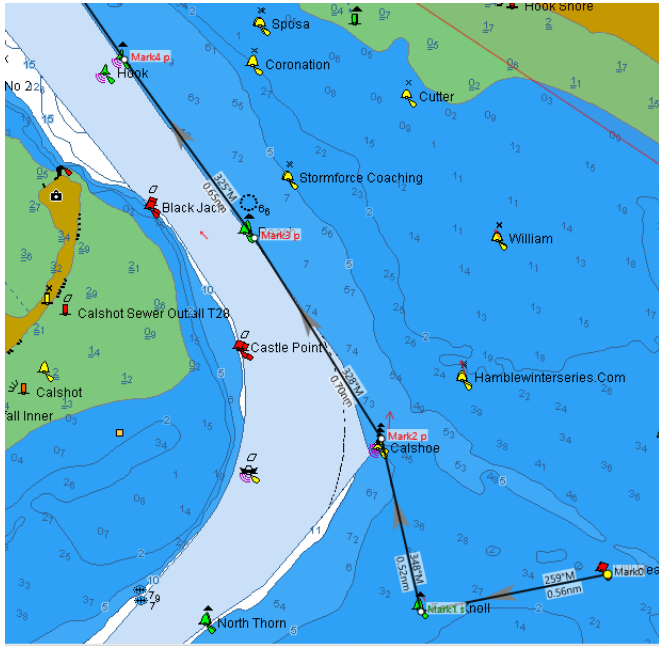
**C**



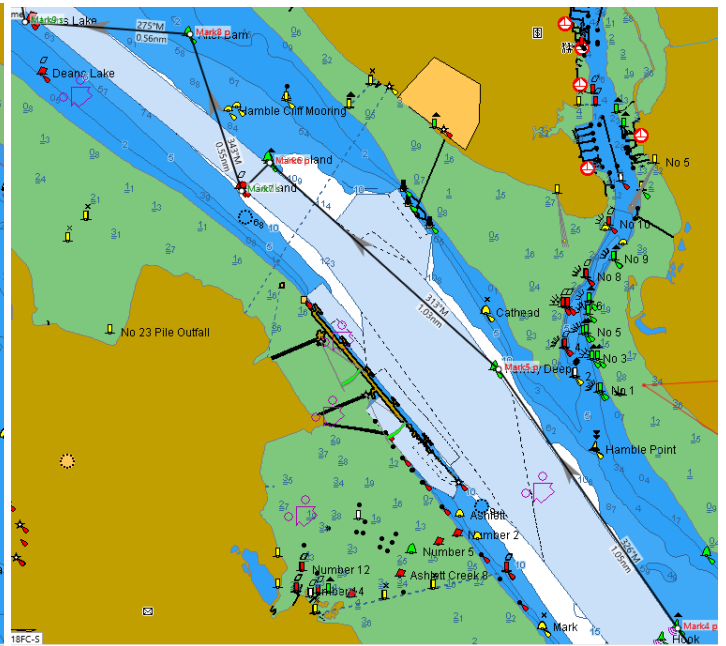
Mark			Latitude	Longitude	Bearing	Range nm	Comment
Mark0	P	Hill Head PHM	50 48.062n	001 15.978w			START leaving Hill Head to PORT within 200m on bearing of 000°M
Mark1	S	East Knoll SHM	50 47.943n	001 16.849w	259	0.56	
Mark2	S	Thorn Knoll SHM	50 47.483n	001 18.421w	246	1.09	
Mark3	P	Calshot NCM	50 48.430n	001 17.015w	44	1.3	
Mark4	P	Reach SHM	50 49.044n	001 17.652w	328	0.73	
Mark5	P	Hook SHM	50 49.556n	001 18.231w	325	0.63	
Mark6	P	Fawley Deep SHM	50 50.424n	001 19.176w	326	1.05	
Mark7	S	Greenland SHM	50 51.094n	001 20.399w	312	1.02	
Mark8	P	After Barn SHM	50 51.529n	001 20.797w	331	0.5	
Mark9	S	Deans Lake PHM	50 51.385n	001 21.598w	255	0.53	
Mark10	S	Deans Elbow PHM	50 52.148n	001 22.752w	317	1.05	
Mark11	P	Netley SHM	50 52.021n	001 21.789w	103	0.62	
Mark12	S	NW Ntley SHM	50 52.307n	001 22.746w	296	0.67	
Mark13	P	Moorhead SHM	50 52.556n	001 22.889w	341	0.26	FINISH leaving Moorhead to PORT within 50m on bearing of 270°M
						10.03	

# SHORT COURSE

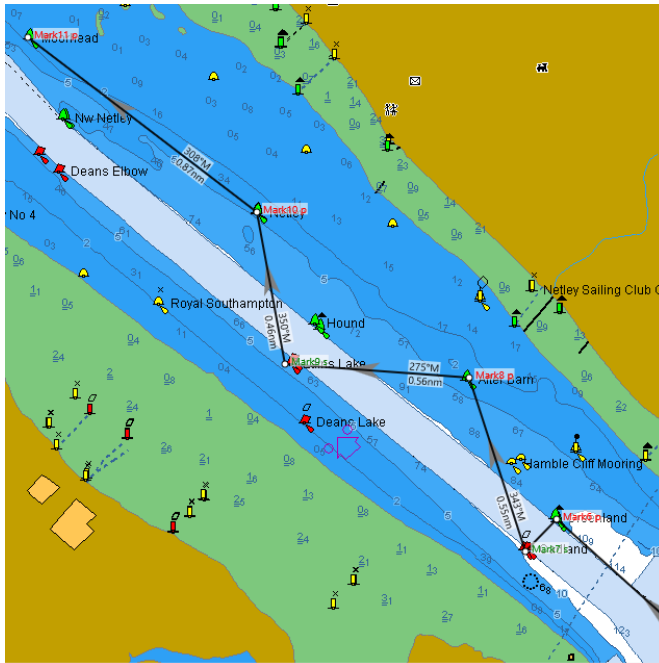
**A**



**B**



**C**



Mark			Latitude	Longitude	Bearing	Range nm	Comment
Mark0	P	Hill Head PHM	50 48.049n	001 15.973w			START leaving Hill Head to PORT within 200m on bearing of 180°M
Mark1	S	East Knoll SHM	50 47.940n	001 16.839w	259	0.56	
Mark2	P	Calshot NCM	50 48.447n	001 17.021w	348	0.52	
Mark3	P	Reach SHM	50 49.035n	001 17.611w	328	0.7	
Mark4	P	Hook PHM	50 49.556n	001 18.213w	325	0.65	
Mark5	P	Fawley Deep SHM	50 50.418n	001 19.164w	326	1.05	
Mark6	P	Greenland SHM	50 51.106n	001 20.376w	313	1.03	
Mark7	S	Cadland PHM	50 51.010n	001 20.526w	226	0.13	
Mark8	P	After Barn SHM	50 51.532n	001 20.798w	343	0.55	
Mark9	S	Lains Lake PHM	50 51.573n	001 21.675w	275	0.56	
Mark10	P	Netley SHM	50 52.029n	001 21.808w	350	0.46	
Mark11	P	Moorhead SHM	50 52.554n	001 22.902w	308	0.87	FINSH leaving Moorhead to PORT within 50m on bearing of 270°M
						7.07	