

Fast Cruise November 2015 – COURSES

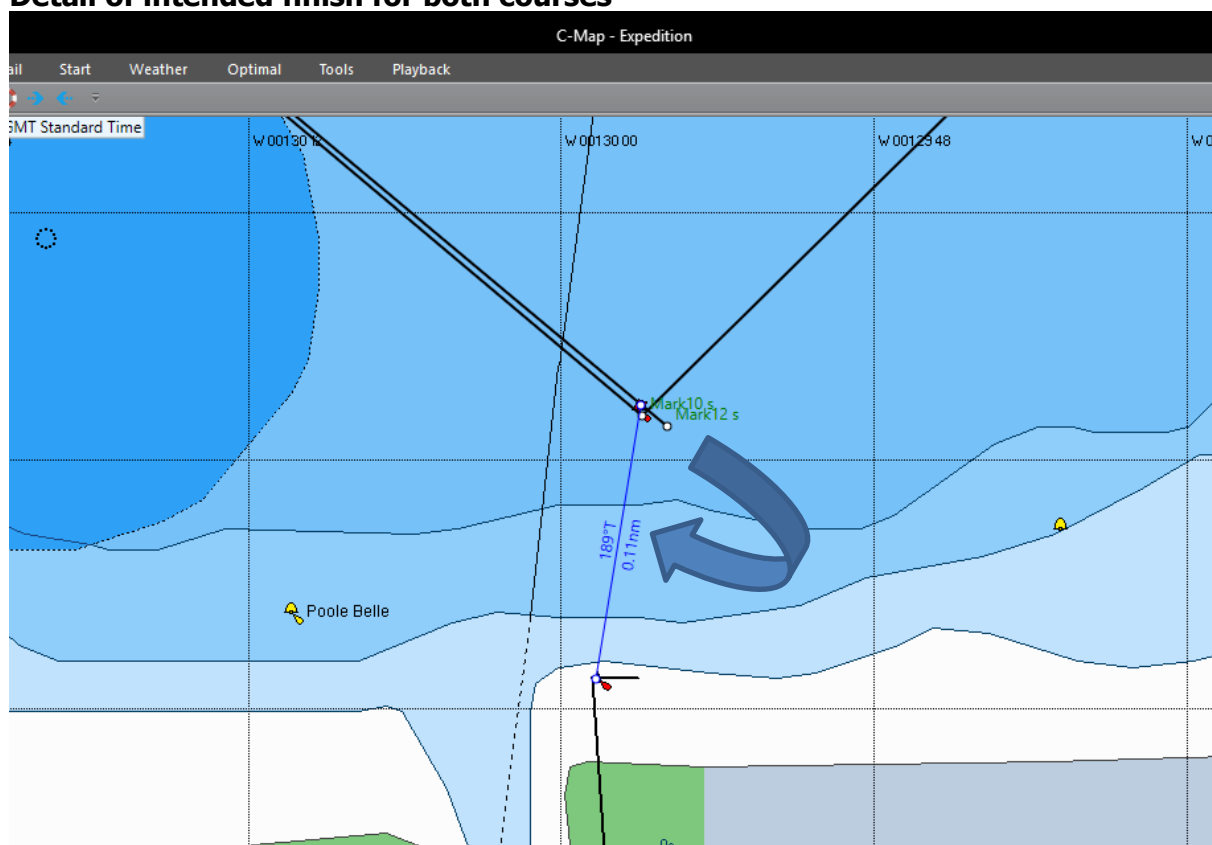
Start 11.00 – 11.10; one race only, with a long and short course. Both courses start and finish in the same manner.

NOTE- the split between long and short courses has changed this month. Boats with a handicap of 1.079 and lower shall sail the short course, boats with a handicap of 1.080 and higher shall sail the long course.

Control yacht this weekend is **KIONI**. Keep a listening watch on VHF Ch 77 from 09.30 until the end of the race or your earlier retirement for course amendments or course shortening instructions.

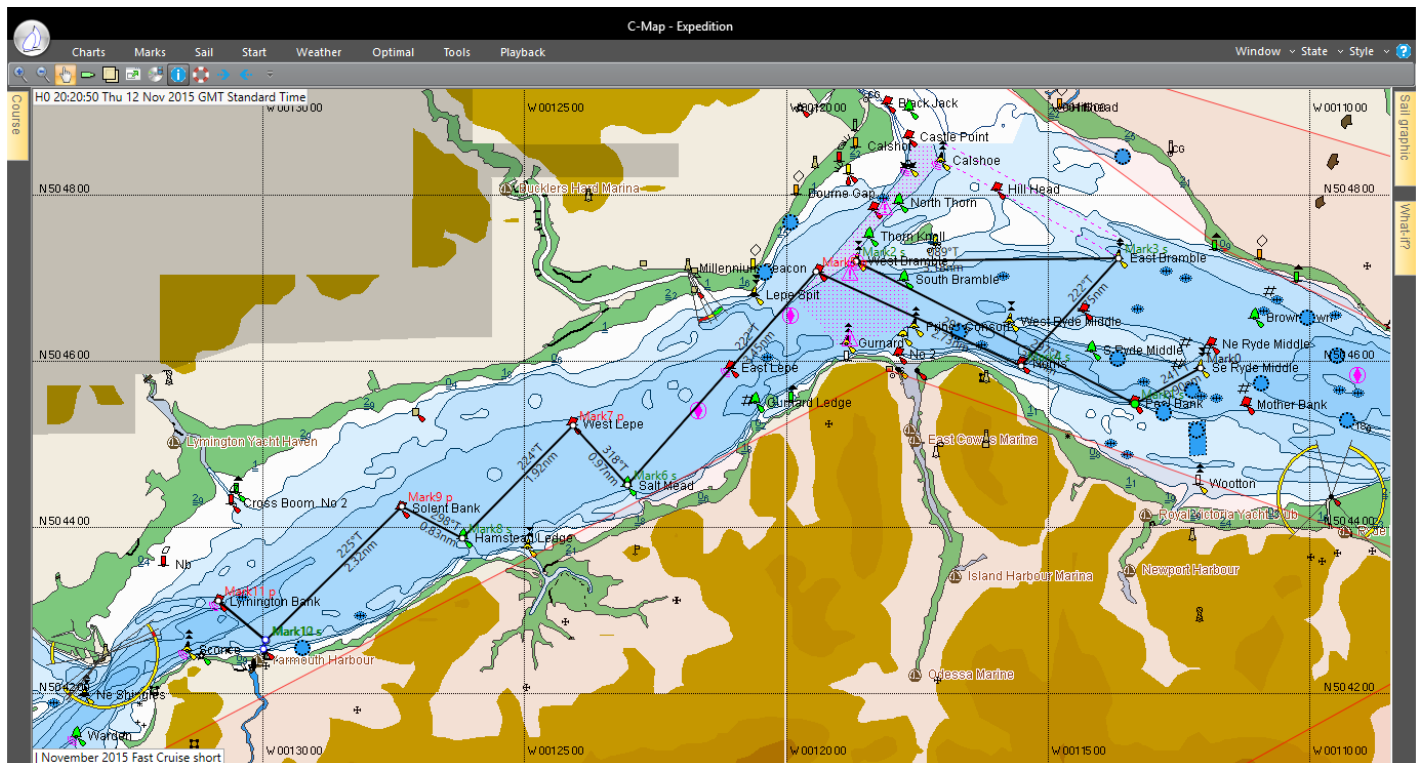
Advise race control **IMMEDIATELY** by SMS (text message) to **+44(0)7970 846698** (note this is a **different number this weekend**) if you retire at any point before finishing the course.

Detail of intended finish for both courses



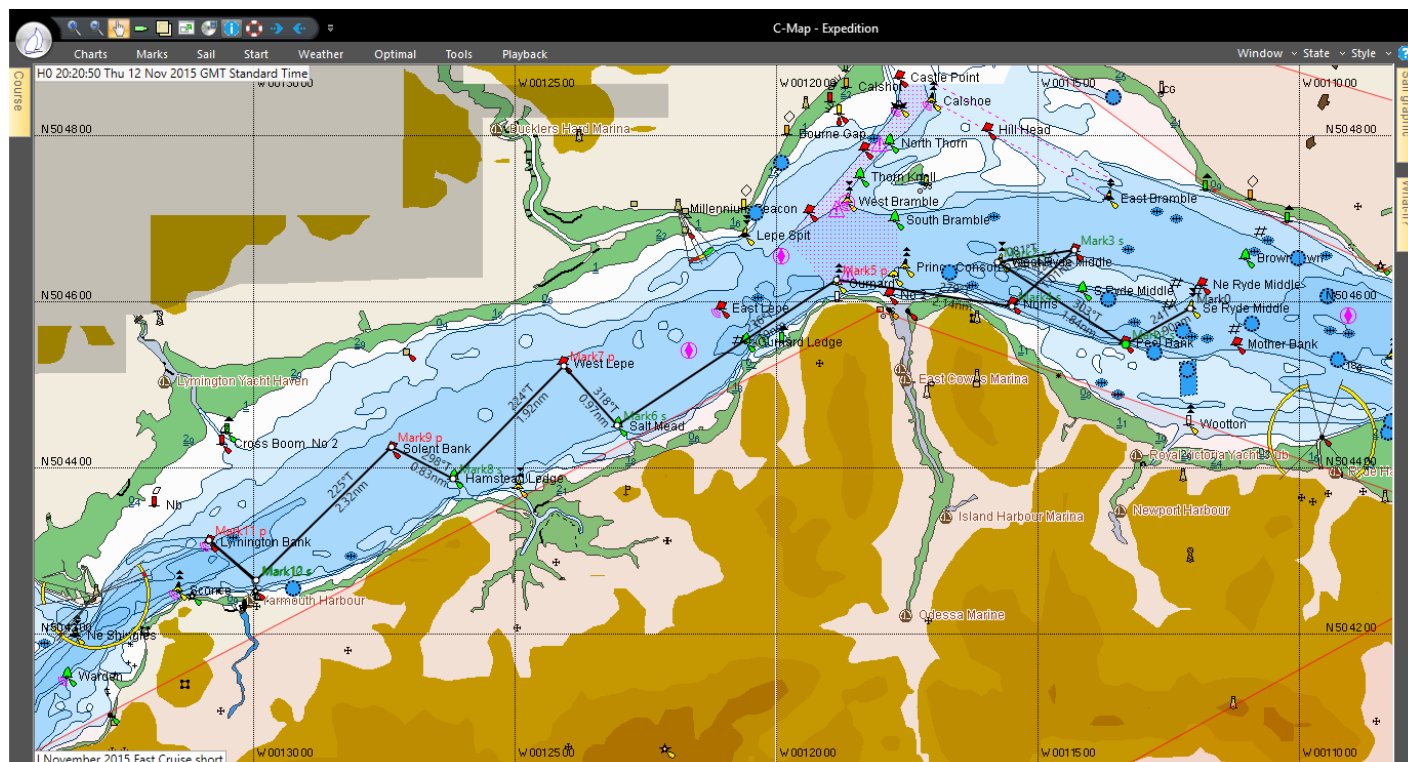
The intended finish line for both courses is between the red light on a post on the end of Yarmouth pier and the red lateral buoy appx 0.11nm away from it on a bearing of appx 010°T from / 190°T to the pier – **crossing the line from East to West, i.e. leaving the red can buoy to Starboard.**

Race - Long Course



Mark			Latitude	Longitude	Bearing	Range nm	Comment
Mark0		SE Ryde Middle	50 45.911n	001 12.064w			START leaving SE Ryde Middle to STARBOARD within 200m on bearing of 150oT
Mark1	S	Peel Bank	50 45.475n	001 13.311w	241°	0.9	
Mark2	S	West Bramble	50 47.195n	001 18.652w	297°	3.79	
Mark3	S	East Bramble	50 47.238n	001 13.624w	089°	3.18	
Mark4	S	Norris	50 45.940n	001 15.488w	222°	1.75	
Mark5	P	NE Gurnard	50 47.081n	001 19.402w	295°	2.73	
Mark6	S	Salt Mead	50 44.500n	001 23.028w	222°	3.45	
Mark7	P	West Lepe	50 45.223n	001 24.052w	318°	0.97	
Mark8	S	Hamstead Ledge	50 43.852n	001 26.176w	224°	1.92	
Mark9	P	Solent Bank	50 44.243n	001 27.337w	298°	0.83	
Mark10	S	Red can off Yarmouth	50 42.618n	001 29.947w	225°	2.32	
Mark11	P	Lyngington Bank	50 43.097n	001 30.846w	310°	0.74	
Mark12	S	Red can off Yarmouth	50 42.613n	001 29.931w	130°	0.75	FINISH by leaving Red can to STARBOARD and crossing transit of red can and red light on end of Yarmouth Pier
						23.34	

Race - Short Course



Mark			Latitude	Longitude	Bearing	Range nm	Comment
Mark0		SE Ryde Middle	50 45.911n	001 12.064w			START leaving SE Ryde Middle to STARBOARD within 200m on bearing of 150°T
Mark1	S	Peel Bank	50 45.475n	001 13.311w	241°	0.9	
Mark2	S	W Ryde Middle	50 46.464n	001 15.764w	303°	1.84	
Mark3	S	N Ryde Middle	50 46.614n	001 14.293w	081°	0.94	
Mark4	S	Norris	50 45.940n	001 15.488w	228°	1.01	
Mark5	P	Gurnard	50 46.262n	001 18.833w	279°	2.14	
Mark6	S	Salt Mead	50 44.500n	001 23.028w	236°	3.19	
Mark7	P	West Lepe	50 45.223n	001 24.052w	318°	0.97	
Mark8	S	Hamstead Ledge	50 43.852n	001 26.176w	224°	1.92	
Mark9	P	Solent Bank	50 44.243n	001 27.337w	298°	0.83	
Mark10	S	Red can off Yarmouth	50 42.618n	001 29.947w	225°	2.32	
Mark11	P	Lymington Bank	50 43.097n	001 30.846w	310°	0.74	
Mark12	S	Red can off Yarmouth	50 42.613n	001 29.931w	130°	0.75	FINISH by leaving Red can to Starboard and crossing transit of red can and red light on end of Yarmouth Pier
						17.56	