

Fast Cruise November 2016 – COURSES

Start 11.00 – 11.10; one race only, with a long and short course.

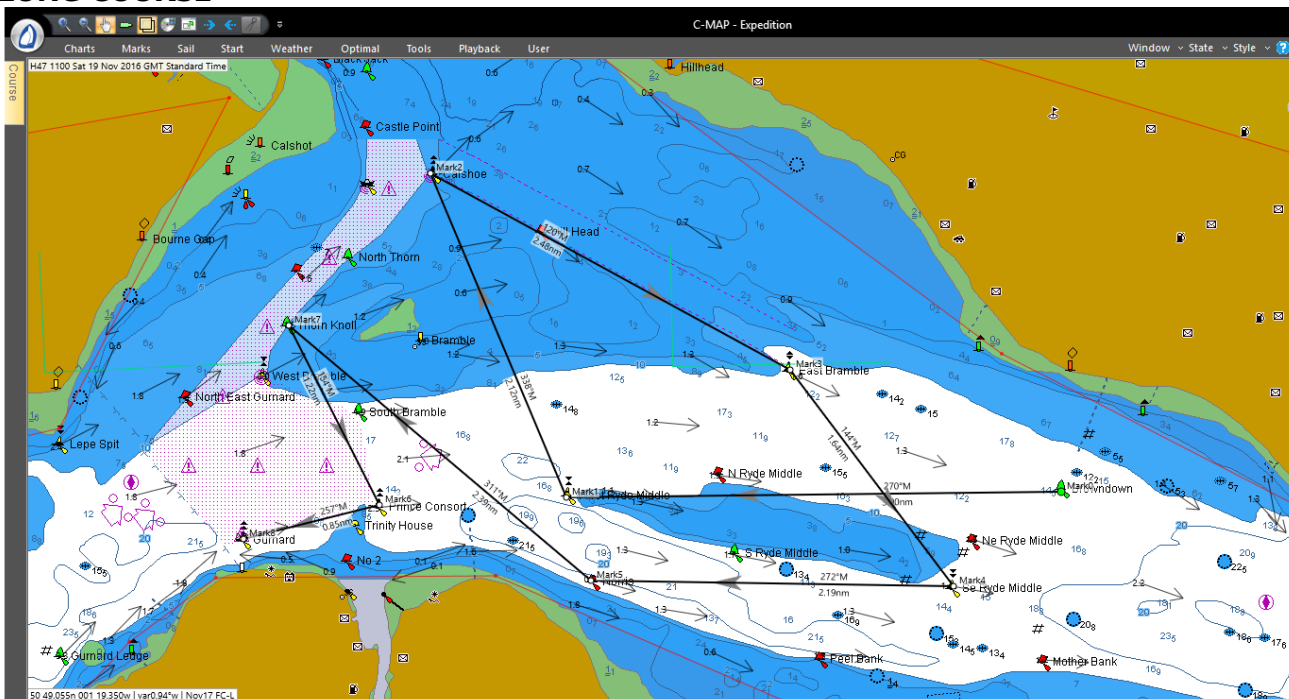
NOTE:

1. The start locations/marks are the same for the 2 courses. Planned finish marks are also the same for both.
2. Boats with a handicap of 1.079 and lower shall sail the short course, boats with a handicap of 1.080 and higher shall sail the long course.

Control yacht this weekend is **WINDHOVER**. Keep a listening watch on VHF Ch 77 from 09.30 until the end of the race or your earlier retirement for course amendments or course shortening instructions. Advise race control immediately by **VHF** if you retire at any point before finishing the course. Send your **start and finish times** by SMS to 07970 846 698 in the format <boat name, start hh.mm.ss, finish hh.mm.ss.>, taking the times from your GPS. **Please do not send elapsed times, or use other formats, it causes extra work!**

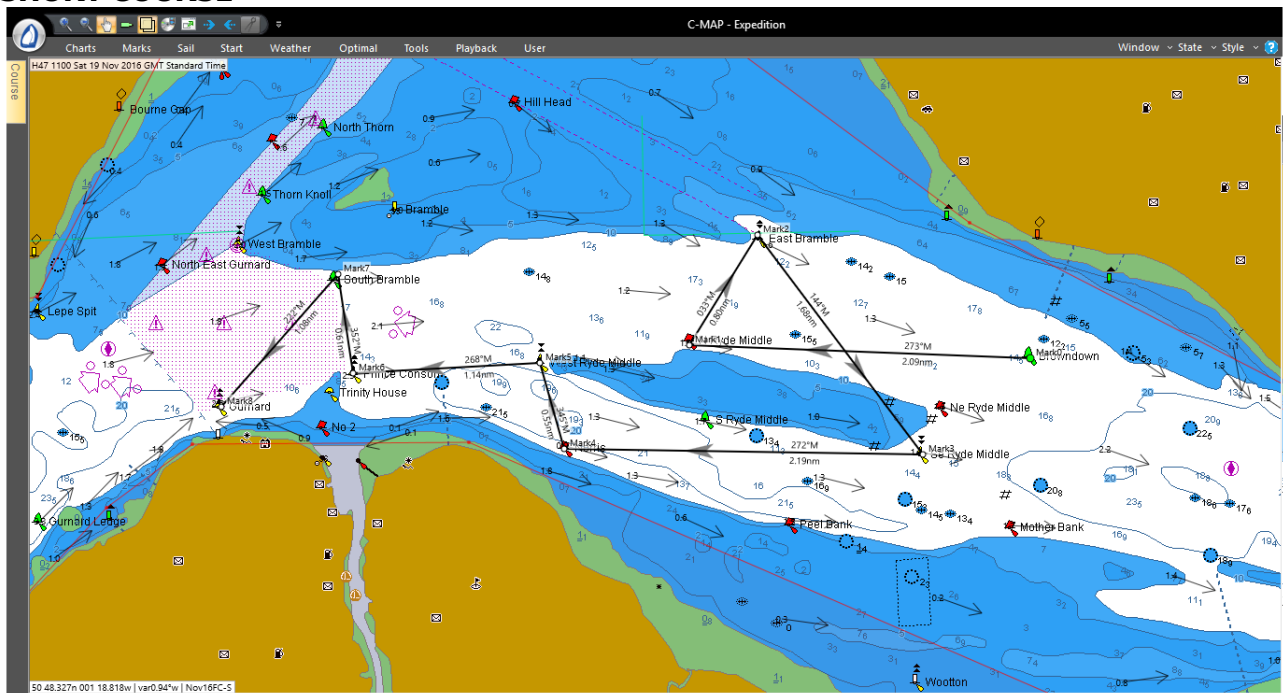
On arrival at Gins Farm please call the Bosun (John) on VHF Ch77 - call sign "Sea Echo" - or telephone the Clubhouse on 01590 616213 to receive berthing instructions. Some boats will probably need to moor mid-river but the Bosun's services have been reserved for the evening for water taxi duties.

LONG COURSE



Mark			Latitude	Longitude	Bearing	Range nm	Comment
Mark0	Browndown SHM	P	50 46.495n	001 11.021w			START within 200m of Browndown on bearing of 180 ⁰ M
Mark1	N Ryde Middel WCM	S	50 46.464n	001 15.757w	270°	3.00	
Mark2	Calshot NCM	S	50 48.424n	001 17.051w	338°	2.12	
Mark3	East Bramble ECM	S	50 47.235n	001 13.616w	120°	2.48	
Mark4	SE Ryde Middle SCM	S	50 45.926n	001 12.054w	144°	1.64	
Mark5	Norris PHM	S	50 45.961n	001 15.518w	272°	2.19	
Mark6	Thorn Knoll SHM	P	50 47.500n	001 18.411w	311°	2.39	
Mark7	Prince Consort NCM	S	50 46.417n	001 17.539w	154°	1.22	
Mark8	Gurnard NCM	S	50 46.209n	001 18.841w	257°	0.85	FINISH within 50m of Gurnard on bearing of 000 ⁰ M
						15.88	

SHORT COURSE



Mark			Latitude	Longitude	Bearing	Range nm	Comment
Mark0	Browdown SHM	P	50 46.503n	001 11.003w			START within 200m of Browdown on bearing of 180°M
Mark1	N Ryde Middle NCM	S	50 46.580n	001 14.301w	273°	2.09	
Mark2	East Bramble ECM	S	50 47.257n	001 13.640w	033°	0.8	
Mark3	SE Ryde Middle SCM	S	50 45.914n	001 12.041w	144°	1.68	
Mark4	Norris PHM	S	50 45.947n	001 15.511w	272°	2.19	
Mark5	West Ryde Middle WCM	P	50 46.472n	001 15.745w	345°	0.55	
Mark6	Prince Consort NCM	S	50 46.411n	001 17.552w	268°	1.14	
Mark7	S Bramble SHM	P	50 47.017n	001 17.697w	352°	0.61	
Mark8	Gurnard NCM	S	50 46.206n	001 18.826w	222°	1.08	FINISH within 50m of Gurnard on bearing of 000°M
						10.14	