

Fast Cruise November 2017 – COURSES

NOTE Start 11.00 – 11.10; one race only but with two courses. Both courses start and finish in the same location.

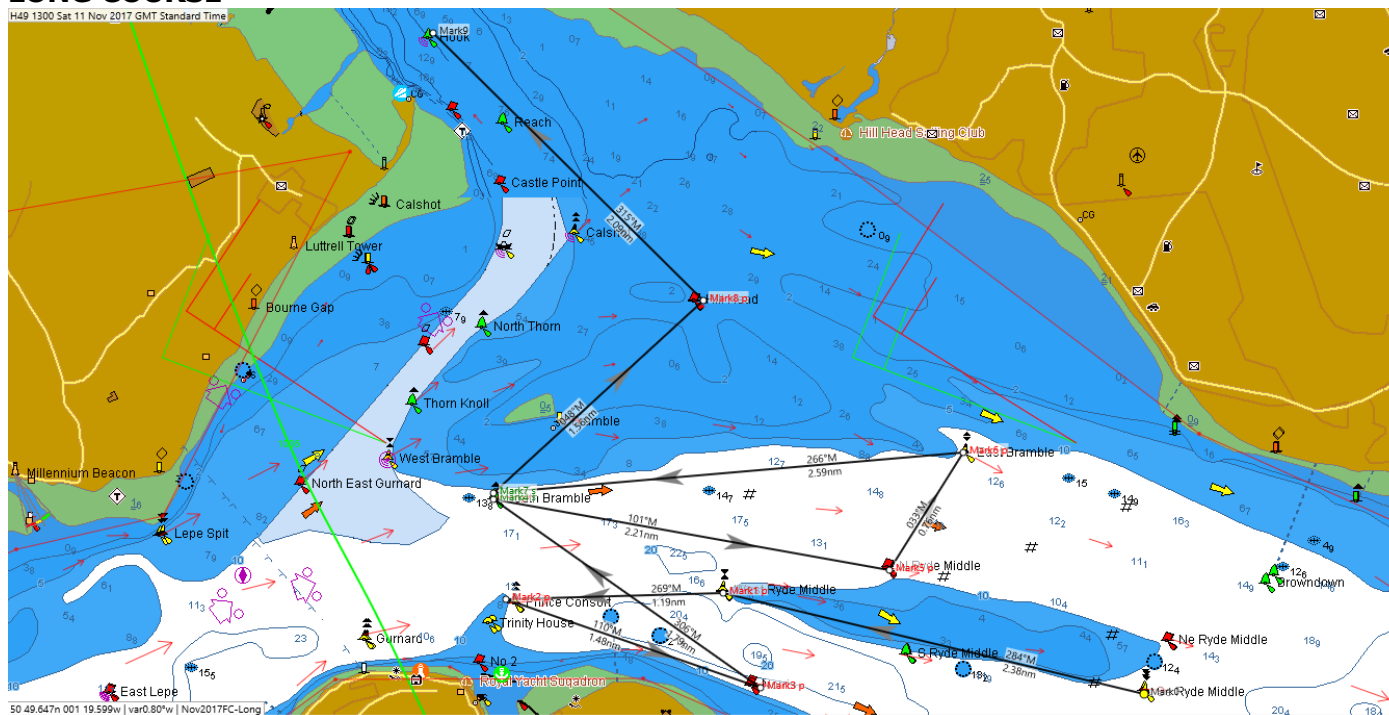
Boats with an LSC Club Handicap of 1.079 and lower shall sail the short course.

Boats with an LSC Club Handicap of 1.080 and above shall sail the long course

The course is defined by the appx Lat/Long POSITION of each mark and as shown on the chartlet. Names of buoys are given for assistance only and should not be relied upon.

Control yacht is **Kioni**. Keep a listening watch on VHF Ch 77 from 09.30 until the end of the race or your earlier retirement for course amendments or course shortening instructions. Advise race control immediately by **VHF** if you retire at any point before finishing the course. Send your **start and finish times** by SMS to 07970 846 698 in the format <boat name, start hh.mm.ss, finish hh.mm.ss., boat in front, boat astern>, taking the times from your GPS. **Please do not send elapsed times, or use other formats. Please send your times as soon as possible after you finish.**

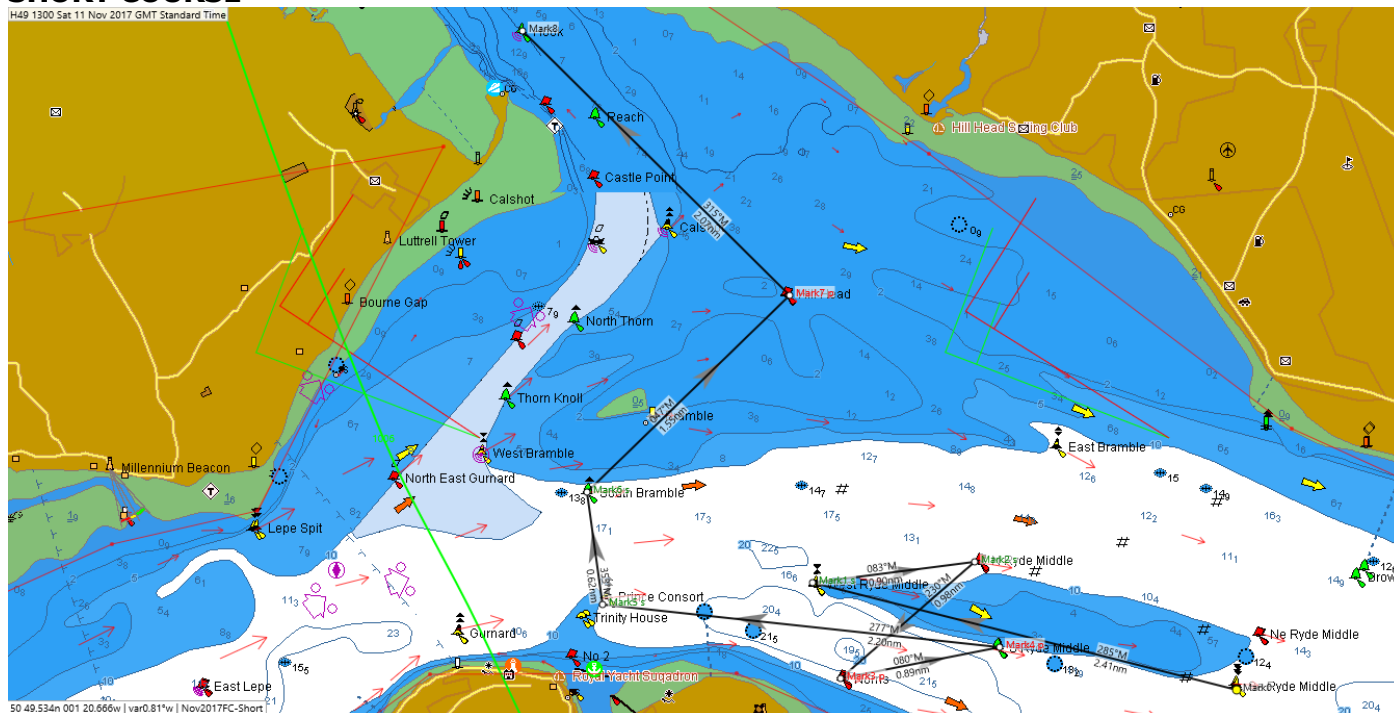
LONG COURSE



Mark			Latitude	Longitude	Bearing	Range nm	Comment
Mark0	Start		50 45.899n	001 12.066w			Start by crossing the imaginary transit between SE Ryde SC and NE Ryde PHM (leaving SE Ryde SC on a bearing of appx 205°M)
Mark1	P	W Ryde Middle WCM	50 46.464n	001 15.735w	284	2.39	
Mark2	P	Prince Consort NCM	50 46.413n	001 17.560w	268	1.16	
Mark3	P	Norris PHM	50 45.941n	001 15.475w	110	1.4	
Mark4	S	South Bramble SHM	50 46.972n	001 17.760w	306	1.77	
Mark5	P	North Ryde Middle PHM	50 46.576n	001 14.297w	101	2.23	
Mark6	P	East Bramble ECM	50 47.240n	001 13.627w	33	0.79	
Mark7	S	South Bramble SHM	50 46.960n	001 17.796w	265	2.65	
Mark8	P	Hill Head PHM	50 48.056n	001 15.972w	47	1.59	
Mark9	Finish	Hook SHM	50 49.527n	001 18.253w	316	2.06	Finish by leaving Hook SHM to PORT on a bearing of 270°M
						16.03	

SHORT COURSE

H49 1300 Sat 11 Nov 2017 GMT Standard Time



Mark			Latitude	Longitude	Bearing	Range nm	Comment
Mark0		Start	50 45.897n	001 12.067w			Start by crossing the imaginary transit between SE Ryde SC and NE Ryde PHM (leaving SE Ryde SC on a bearing of appx 205°M)
Mark1	S	W Ryde Middle WCM	50 46.484n	001 15.765w	285	2.41	
Mark2	S	N Ryde Middle PHM	50 46.601n	001 14.355w	83	0.9	
Mark3	P	Norris PHM	50 45.960n	001 15.524w	230	0.98	
Mark4	P	S Ryde Middle SHM	50 46.132n	001 14.138w	80	0.89	
Mark5	S	Prince Consort NCM	50 46.368n	001 17.593w	277	2.2	
Mark6	S	South Bramble SHM	50 46.983n	001 17.734w	353	0.62	
Mark7	P	Hill Head PHM	50 48.062n	001 15.967w	47	1.55	
Mark8		Hook SHM	50 49.513n	001 18.292w	315	2.07	Finish by leaving Hook SHM to PORT on a bearing of 270°M
						11.62	

NB - No Browndown 

© LSC November 2017