

Fast Cruise October 2016 – COURSES

Start 11.00 – 11.10; one race only, with a long and short course.

NOTE:

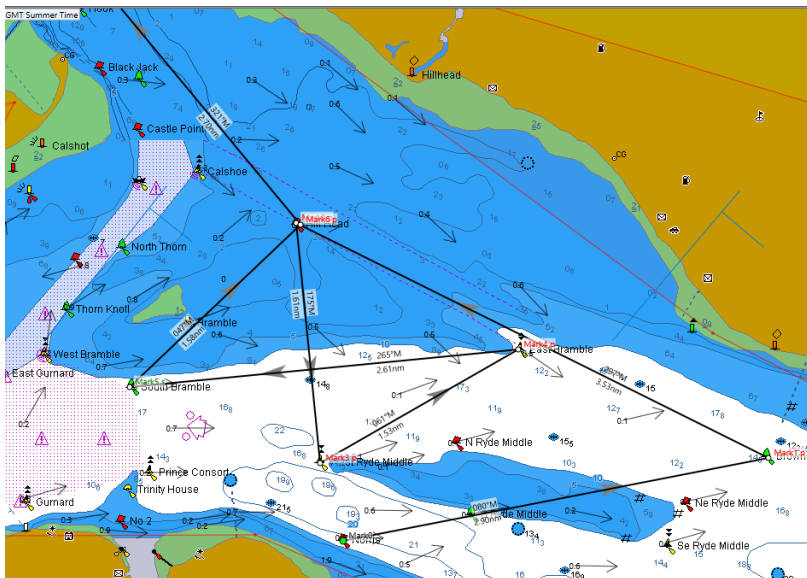
1. The start locations/marks are different for the 2 courses. Planned finish marks are the same for both.
2. Boats with a handicap of 1.079 and lower shall sail the short course, boats with a handicap of 1.080 and higher shall sail the long course.

Control yacht this weekend is **KIONI**. Keep a listening watch on VHF Ch 77 from 09.30 until the end of the race or your earlier retirement for course amendments or course shortening instructions. Advise race control immediately by **VHF** if you retire at any point before finishing the course. Send your **start and finish times** by SMS to 07970 846 698 in the format <boat name, start hh.mm.ss, finish hh.mm.ss.>, taking the times from your GPS. **Please do not send elapsed times, or use other formats, it causes extra work!**

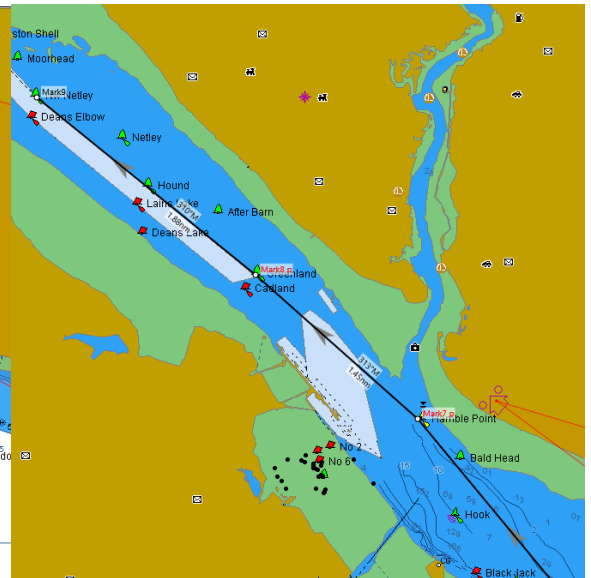
After finishing/retirement yachts approaching Town Quay marina should contact them on VHF Ch 80 or call on 07764 29 35 88/ 02380 234397 to be allocated a berth. Advise the marina that you are part of the Little Ship Club rally for which berths have been reserved and you should receive a 10% rally discount.

LONG COURSE

Part a



contd - Part b

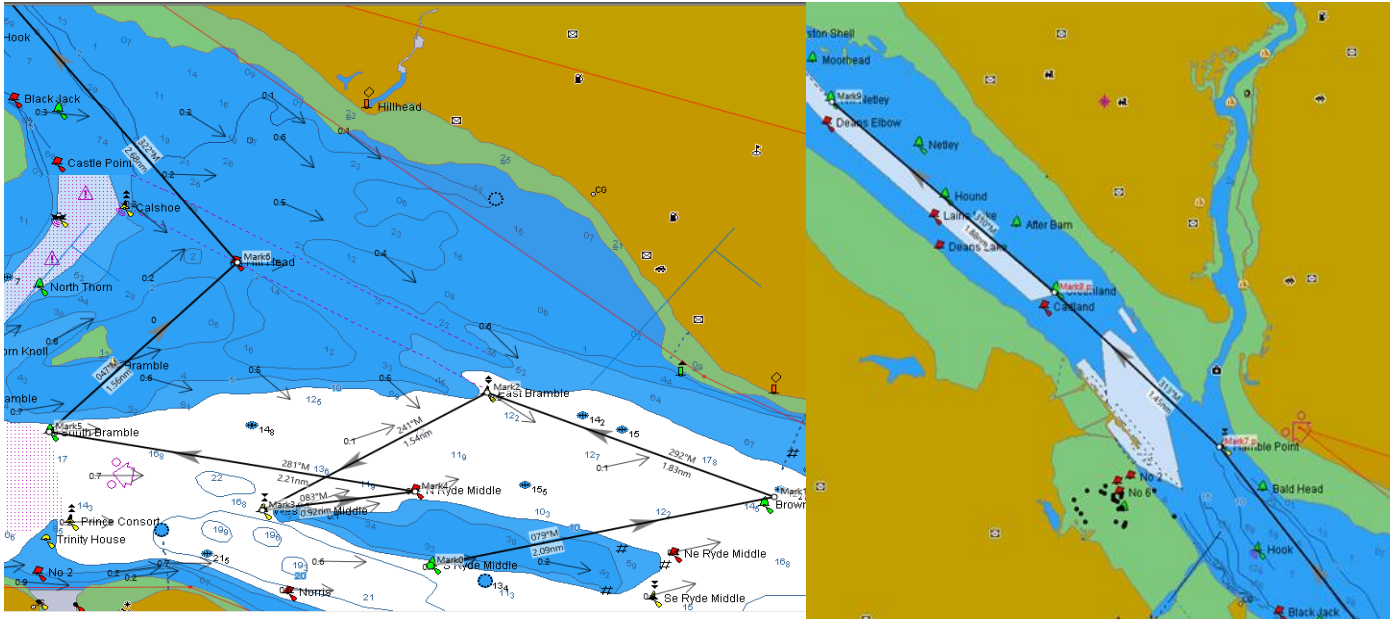


Mark			Latitude	Longitude	Bearing	Range nm	Comment
Mark0	Norris PHM	S	50 45.946n	001 15.502w			START within 200m of NORRIS PHM on bearing of 170 ⁰ M
Mark1	Browdown SHM	P	50 46.502n	001 11.004w	080°	2.9	
Mark2	Hill Head PHM	P	50 48.070n	001 16.000w	297°	3.53	
Mark3	W Ryde Middle WCM	P	50 46.467n	001 15.747w	175°	1.61	
Mark4	East Bramble ECM	P	50 47.226n	001 13.651w	061°	1.53	
Mark5	South Bramble SHM	S	50 46.975n	001 17.761w	265°	2.61	
Mark6	Hill Head PHM	P	50 48.060n	001 15.954w	047°	1.58	
Mark7	Hamble Point SCM	P	50 50.137n	001 18.680w	321°	2.7	
Mark8	Greenland SHM	P	50 51.100n	001 20.391w	313°	1.45	
Mark9	NW Netley SHM		50 52.281n	001 22.701w	310°	1.88	FINISH within 50m of NW Netley on bearing of 220 ⁰ M
						19.77	

SHORT COURSE

Part a

contd – Part b



Mark			Latitude	Longitude	Bearing	Range nm	Comment
Mark0	S Ryde Middle SHM		50 46.123n	001 14.165w			START within 200m of S Ryde Middle on bearing of 170 ⁰ M
Mark1	Browdown SHM	P	50 46.562n	001 10.936	079°	2.09	
Mark2	East Bramble ECM	P	50 47.231n	001 13.638	292°	1.83	
Mark3	W Ryde Middle WCM	P	50 46.475n	001 15.751	241°	1.54	
Mark4	N Ryde Middle PHM	P	50 46.597n	001 14.311	083°	0.92	
Mark5	S Mramble SHM	S	50 46.977n	001 17.756	281°	2.21	
Mark6	Hill Head PHM	P	50 48.064n	001 15.987	047°	1.56	
Mark7	Hamble Point SCM	P	50 50.147n	001 18.655	322°	2.68	
Mark8	Greenland SHM	P	50 51.700n	001 21.552	311°	2.4	
Mark9	NW Netley SHM		50 52.293n	001 22.729	310°	0.95	FINISH within 50m of NW Netley on bearing of 220 ⁰ M
						16.18	