

Fast Cruise 2018/1 - October 2018 – COURSES

NOTE Start 11.00 – 11.10; one race only but with two courses. Both courses start and finish in the same locations.

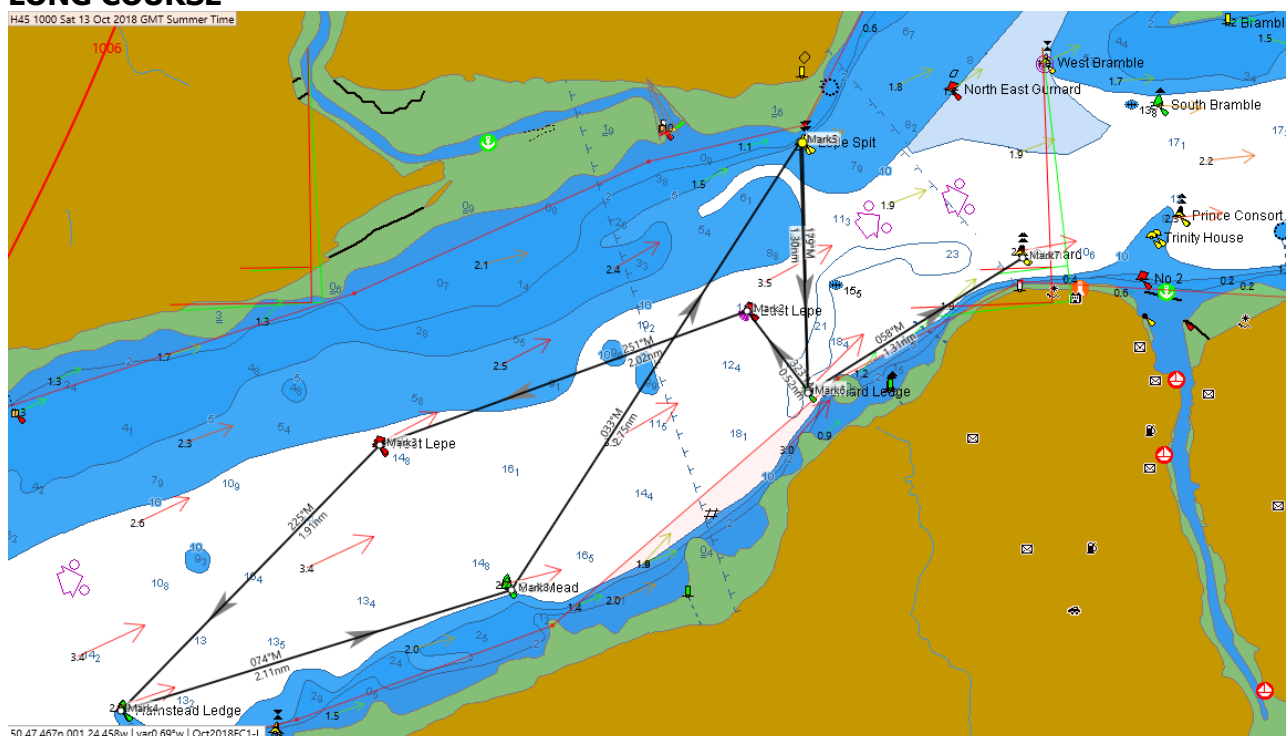
Boats with an LSC Club Handicap of 1.079 and lower shall sail the short course.

Boats with an LSC Club Handicap of 1.080 and above shall sail the long course

The course is defined by the appx Lat/Long POSITION of each mark and as shown on the chartlet. Names of buoys are given for assistance only and should not be relied upon.

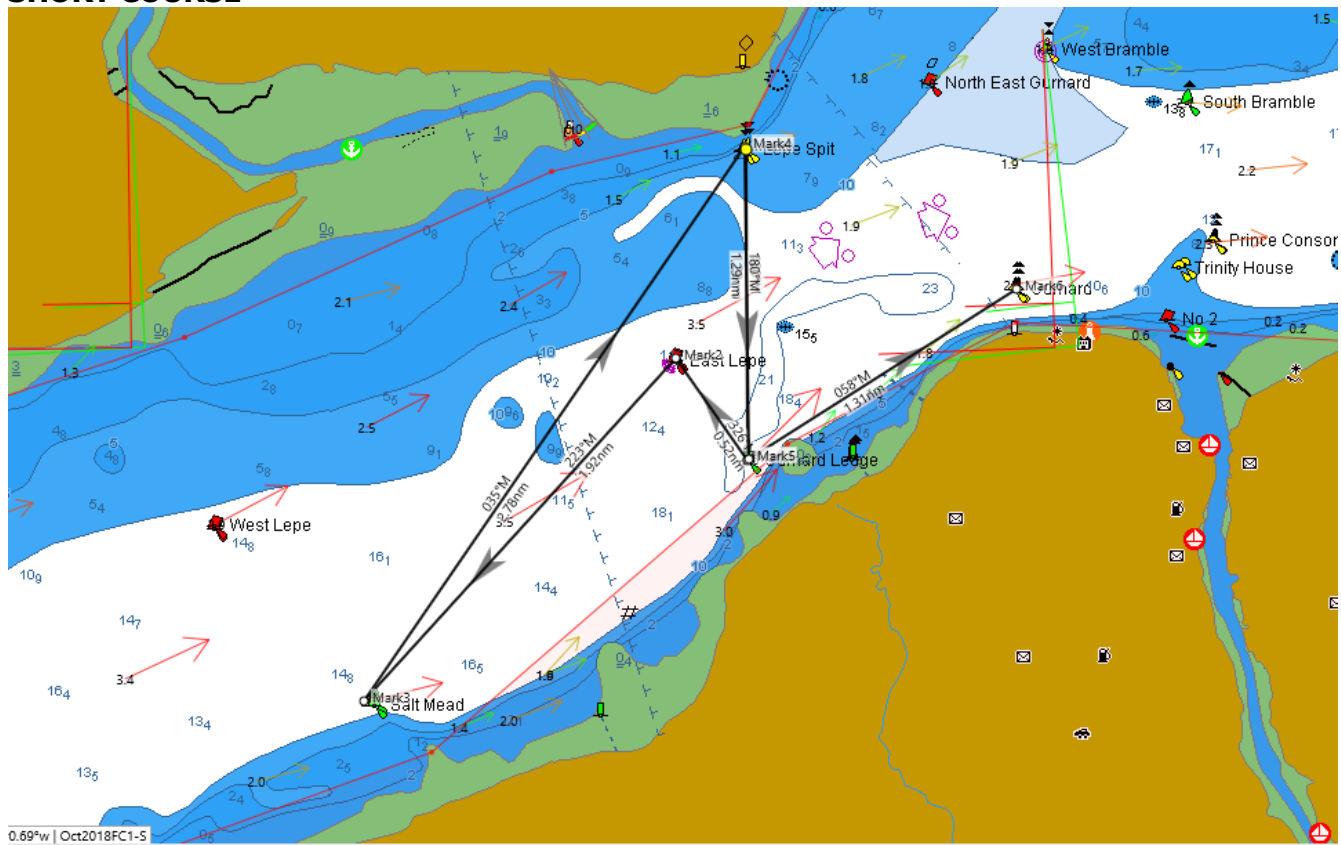
Control yacht is **Kioni**. Keep a listening watch on VHF Ch 77 from 09.30 until the end of the race or your earlier retirement for course amendments or course shortening instructions. Advise race control immediately by **VHF (not SMS)** if you retire at any point before finishing the course. Send your **start and finish times** by SMS to 07970 846 698 in the format <boat name, start hh.mm.ss, finish hh.mm.ss., boat in front, boat astern>, taking the times from your GPS. **Please do not send elapsed times, or use other formats.** Please send your times by **17.00 on Saturday.**

LONG COURSE



		Mark	Latitude	Longitude	Bearing	Range nm	Comment
Mark0	P	Lepe Spit SCM	50 46.786n	001 20.615w			START leaving Lepe Spit to PORT within 200m on a bearing of 100°M
Mark1	S	Gurnard Ledge SHM	50 45.508n	001 20.578w	180	1.28	
Mark2	P	East Lepe PHM	50 45.919n	001 21.075w	323	0.52	
Mark3	P	West Lepe PHM	50 45.229n	001 24.075w	251	2.02	
Mark4	P	Hamstead Ledge SHM	50 43.863n	001 26.180w	225	1.91	
Mark5	P	Salt Mead SHM	50 44.483n	001 22.995w	74	2.11	
Mark6	S	Lepe Spit SCM	50 46.793n	001 20.641w	33	2.75	
Mark7	P	Gurnard Ledge SHM	50 45.497n	001 20.575w	179	1.3	
Mark8	P	Gurnard NCM	50 46.197n	001 18.826w	58	1.31	FINISH leaving Gurnard to PORT on a bearing of 000/360°M
						13.18	

SHORT COURSE



		Mark	Latitude	Longitude	Bearing	Range nm	Comment
Mark0	P	Lepe Spit SCM	50 46.788n	001 20.600w			START leaving Lepe Spit to PORT within 200m on a bearing of 100°M
Mark1	S	Gurnard Ledge SHM	50 45.504n	001 20.591w	180	1.28	
Mark2	P	East Lepe PHM	50 45.926n	001 21.061w	326	0.52	
Mark3	P	Salt Mead SHM	50 44.511n	001 23.102w	223	1.92	
Mark4	S	Lepe Spit SCM	50 46.799n	001 20.609w	35	2.78	
Mark5	P	Gurnard Ledge SHM	50 45.510n	001 20.582w	180	1.29	
Mark6	P	Gurnard NCM	50 46.208n	001 18.831w	58	1.31	FINISH leaving Gurnard to PORT on a bearing of 000/360°M
						9.09	